

CENTRAL GOLDFIELDS

ART
GALLERY

Exhibition Program

JULY 2024 – FEBRUARY 2025

Ignite your imagination!



CENTRAL GOLDFIELDS
**ART
GALLERY**



Welcome to the Central Goldfields Art Gallery program for July 2024 to February 2025.



With our wonderfully re-imagined Gallery reopened since March 2023, we are delighted that visitation has almost

doubled since that time. Our community and visitors are enraptured in the new-look Gallery.

We are beyond proud that our Gallery redesign by architects Nervegna Reed Architecture was featured in the prestigious Venice Biennale for Architecture in 2023. But the accolades didn't finish there – builders for the redevelopment, Colbrico, trading as Searle Bros, were the winners of the Master Builders Victoria 2023 Excellence in Construction Awards for projects under \$3 million. The Gallery was also Highly Commended for the Large Project of the Year in the 2023 Victorian Museums and Galleries Awards.

The launch in August of the Indigenous Interpretive Garden *garingilang gatjin wii*, adjacent to the Gallery, will be a new public place for the whole community to come together in a spirit of reconciliation to understand and celebrate culture.

Central Goldfields Shire's vision is for the Gallery to be an innovative and inclusive Public Art Gallery for the people of our shire and surrounding region alike. We are proud that it is a place where our community as well as visitors from far and wide can enjoy and be inspired by art as part of their everyday lives. We hope you enjoy this diverse and exciting exhibition program as much as I do.

**Central Goldfields Shire Mayor
Councillor Liesbeth Long**

Central Goldfields Shire Council acknowledges and extends appreciation for the Dja Dja Wurrung People, the Traditional Owners of the land that we are on.

We pay our respects to leaders and Elders past, present and emerging for they hold the memories, the traditions, the culture and the hopes of all Dja Dja Wurrung People.

We express our gratitude in the sharing of this land, our sorrow for the personal, spiritual and cultural costs of that sharing and our hope that we may walk forward together in harmony and in the spirit of healing.

*Cover design:
Sharlee Dunolly-Lee (Dja Dja Wurrung)
Design for feature plaque for garingilang gatjin wii
Digital design
2024*

garingilang gatjin wii are the Dja Dja Wurrung words for water and fire garden.

CENTRAL GOLDFIELDS ART GALLERY

Old Fire Station, 1 Neill Street,
Maryborough, Victoria, 3465.
www.centralgoldfieldsartgallery.com.au

garingilang gatjin wii

garingilang gatjin wii are the Dja Dja Wurrung words for water and fire garden. It is the name for the new public garden space alongside the Gallery that has been designed collaboratively with Dja Dja Wurrung Elders and artists who formed a wartaka or advisory group.

Dja Dja Wurrung Group CEO Rodney Carter explains that "The Garden will strengthen relationships between people and Country and provide opportunities for non-Indigenous community members to learn about

Aboriginal Cultural Heritage and our shared responsibility to protect it."

Central Goldfields Shire Mayor Councillor Liesbeth Long explains that the garden "will be a welcoming space for our local community and visitors to our Shire to come and reflect, learn and share culture as part of an active and engaged approach to reconciliation."

garingilang gatjin wii is jointly funded by the Victorian Government and Central Goldfields Shire Council and will be officially opened in August 2024.

The Art of Gold

Golden treasures on loan from the National Gallery of Australia

27 June 2024 – 28 June 2026

Come on the journey with us as we present a program of exhibitions and programs associated with this remarkable display of golden treasures. These artworks are on long term loan from the National Gallery of Australia with support from the Australian Government as part of the Sharing the National Collection initiative.

Great things can come in small sizes with nine exquisite items of mid-19th century goldfields jewellery presented in the one display case. Alongside these items are a necklace and two rings created by Maryborough-born Rowena Gough, who is now one of Australia's leading contemporary jewellers.

The mid-19th century artworks were commissioned by miners who'd struck gold. The tools of the mining trade feature on the design of the earrings as a symbol of



**unknown silversmith,
Locket**
*c.1860, Australia, gold:
engraved, gold-bearing
quartz nuggets,
printed paper.*

their success. Also on display is an elaborate brooch presented to the celebrated goldfields entertainer, Lola Montez by adoring fans during the heady days of the goldrush.

Gold is a continuing thread in Central Victoria and these artworks help explore this topic in new ways.

PRESENTED BY



SUPPORTED BY



An Australian Government Initiative

These works of art are on long term loan from the National Gallery of Australia with support from the Australian Government as part of Sharing the National Collection #artacrossaustralia



Jeff Makin, *Australia Felix*, 24/60, etching, 2004. 76 x 56cm. Donated through the Cultural Gifts Program by Elizabeth and Jeff Makin. Central Goldfields Art Gallery Collection. © Jeff Makin. Reproduced with permission of the artist

Australia Felix

Suite of ten etchings by Jeff Makin

19 June to 8 September 2024

Ramp Space

The lucky country or Australia Felix was a term coined by the explorer Major Mitchell in 1836 to describe the rich pastoral country south of the Murray River. *Australia Felix* is the title for a suite of ten etchings by one of Australia's most acclaimed landscape artists, Jeff Makin. The genesis of the work stems from a partnership between the Australian Conservation Foundation and Port Jackson Press as a celebration of World Environment Week in 2004. From etchings depicting the icy waters of Cradle Mountain in Tasmania to the arid terrain of the Top End, these artworks invite us to pause and reflect on the wondrous natural beauty of our continent. .



Michele Eastwood, *Dressed in Memories IV*, c.2005. Wool, cotton thread. National Wool Museum Collection.

Expressions

Winners of the Wool Quilt Prize

On loan from the National Wool Museum

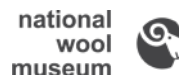
18 July to 13 October 2024

Engine Room

Expressions offers visitors the chance to marvel at the creations of leading contemporary art quilters as part of the Gallery's commitment to this fascinating genre of artmaking.

The exhibition presents all twelve winners of the prestigious *Expressions Wool Quilt Prize*. *Expressions* is presented every two years between the OzQuilt Network and the National Wool Museum and the winning works now form part of the National Wool Museum Collection.

Opening: 2pm Saturday 20 July 2024





Flossie Peitsch, *10 Oblique*, 2023, Billiluna Tapestry Weaving, 200 x 300mm (each panel).

FEARLESS

Flossie Peitsch

12 September to 17 November 2024

Ramp Space

FEARLESS is a new body of remarkable tapestry weavings by internationally renowned artist and Maryborough resident, Flossie Peitsch. Tackling the mystifying world of change, this art presents a tactile, non-objective journal. *FEARLESS* captures the artist's first-hand responses of working in communities throughout remote Australia. The weavings' themes are *BABY STEPS*, *DESERT LIGHT*, *REPRISE* and *RESOLVE*.

Opening: 2pm Saturday 14 September 2024

Emergent – VCE 2024

17 October to 24 November 2024

Engine Room

The spotlight shines on the creative energy of Central Goldfields' young artists.

Opening: 5pm Friday 18 October 2024



Ian Kemp, *Maryborough Railway Station*, 2024, Chromoluxe aluminium print.

In solitude

Photographs by Ian Kemp

21 November 2024 to 2 February 2025

Ramp Space

I find my creativity in solitude, I work alone to find the way to express my ideas. – Ian Kemp, April 2024.

Solitude was the impetus that led Kemp to take up photography initially with the camera club in Maryborough and then later at the Photography Studies College in Melbourne.

It was in and through solitude that the artist processed grief and developed ideas for creative expression using the photographic medium.

Majestic landscapes, whether in the remote Puna region of Argentina, or here in Central Victoria, are some of the locations that serve as a backdrop for Kemp to explore deeper questions through his art.

Opening: 2pm Saturday 23 November 2024



Community Art and 9 x 5 Exhibition

28 November 2024 to 16 February 2025

Engine Room

The creativity of Central Goldfields residents is front and centre in this celebration of local talent. This year there's a nod to the history of Australian art history with a special 9 x 5 category and display.

The 9 x 5 Impressionist exhibition held in Melbourne in 1892 changed the course of Australian art history. 182 impressions were predominantly painted on cedar cigar-box lids 9 x 5 inches in size in a fresh and painterly style. The art world was shocked but the exhibition was a popular success.

In a homage to Australian Impressionism, local people have created their own 9 x 5s that continues on the spirit of creative innovation.

Opening: 2pm Saturday 30 November 2024

Public Programs

Art Talks: The Gallery hosts Art Talks each season in partnership with U3A Maryborough Inc. See our website for details.

Guided tours and talks: The Gallery welcomes groups for guided tours and talks, these sessions may be offered outside of opening hours – contact us for more information

For Kids: We offer education programs for early years, primary school, secondary and tertiary students and community groups. Pick up a free copy of 'Burra's Art Quest' activity to have fun exploring the Gallery.

School holiday programs: We host 'hands-on' and fun activities during the school holidays, see our website for details. Be the first to find out and book by joining our mailing list – just contact us at the Gallery to join.

Gallery Shop

Browse our art cards and fine artisan wares.

Volunteer with us

Contact the Gallery to find out more about joining our friendly team of volunteers who support the Gallery.

Connect with us

Sign up to our free e-newsletter see links on our website or use the QR code overleaf. Follow and engage with us on Facebook and Instagram.

Help the Gallery Grow

All donations support the acquisition of art for the permanent collection.

Central Goldfields Art Gallery is a registered Deductible Gift Recipient. All donations over \$2.00 to Central Goldfields Art Gallery are fully tax deductible. If you would like to make a donation please contact the Gallery.

CENTRAL GOLDFIELDS
**ART
GALLERY**



Old Fire Station, 1 Neill Street,
Maryborough, Victoria (see map below).

T: (+61 3) 5461 6600

E: cgsc.art@cgoldshire.vic.gov.au

www.centralgoldfieldsartgallery.com.au

Opening Hours: Thursday to Sunday 10am–4pm

The Gallery is closed between 23 December 2024 to 1 January 2025 and on ANZAC Day and Good Friday.

FREE ENTRY – Donations are welcome and support the purchase of art for the collection.

Accessibility: This is a wheelchair accessible facility; service animals are welcome.

There are accessible parking spaces and a bicycle hoop.



Details in this program were correct at the time of printing. All artworks in this program have been reproduced with the permission of the artist or copyright holder.

PG Public
Galleries
AV Association
Victoria